

Timber Type 17 Screw

Head Style: Countersunk Head

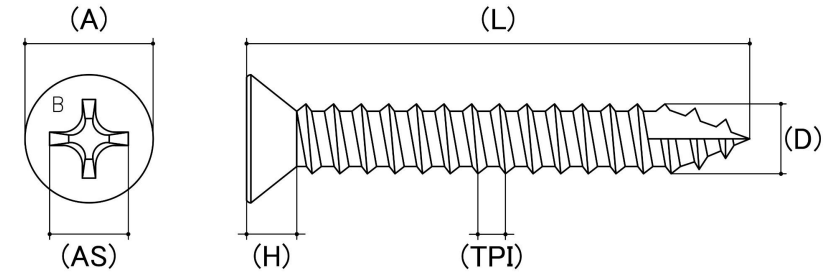
Drive Type: Phillips

Material: Hardened Steel

Class Grade: Class 3 / 4 / B8

Finish: Galvanised

Corrosion Protection Level: Excellent



*CAD drawings shown for graphic representation only.**

| Size | Thread Pitch (TPI) | Thread Type | Product Diameter (D) (mm) | | Head Diameter (A) (mm) | | Head Height (H) (mm) | Driver Bit Size (AS) | sku (qfind) |
|--------------|--------------------|-------------|---------------------------|------|------------------------|------|----------------------|----------------------|-------------|
| | | | Min | Max | Min | Max | Nom | Nom | |
| 10g (4.80mm) | 12 | Coarse | 4.65 | 4.80 | 9.00 | 9.30 | 4.20 | PH2 | 06C10C3 |

Disclaimer:

Dimensional data and technical information was obtained from publicly available sources and not acquired through standard agencies. It has been completed and compiled for reference purposes only; where discrepancies are found they are subject to change without notice. Bolt & Nut Australia makes no warranties or representations regarding the accuracy and validity of the compiled information and data. Contact the relevant standard authorities for accurate and detailed information.

* CAD drawings may not reflect diameter, thread length or overall length.

© Bolt & Nut Australia Pty Ltd. All rights reserved.

Version: 18 Mar 2024